



Chief Electoral Officer Report  
Topsail - Paradise By-Election

January 24, 2019

# Table of Contents

---

By-Election Summary	1
Procedural And Administrative Changes In Effect for the Topsail - Paradise By-Election	3
Boundaries and Polling Stations	4
Election Officials	4
Candidate Registration and Nomination	5
Methods of Voting	5
Special Ballot Voting:	5
ENL HQ and District Office	5
Hospitals	6
Personal Care Homes	6
Advance Poll	7
By-Election Day	8
Elector Participation	8
Official Addition of the Votes	9
Return of the Writ	9
Observations of the CEO:	
Staff Hiring For District Office, Polling Stations and at ENL HQ	9
Special Ballots: Voting at Personal Care Homes	10
Advance Voting Days	11
Appendix A: Poll Boundary Descriptions	12
Appendix B: Topsail - Paradise Poll Division Map	15
Appendix C: Recapitulation of Votes	16

## BY-ELECTION SUMMARY

---

On Friday, November 2, 2018, Paul Davis, the Progressive Conservative Member for the electoral district of Topsail-Paradise, resigned his seat resulting in a vacancy in the House of Assembly.

A proclamation was issued on December 19, 2018 pursuant to Order in Council Number 2018-266 and the Chief Electoral Officer issued a writ of election to the Returning Officer, Ms. Daisy Carroll.

The by-election date was set for Thursday, January 24, 2019. The following key dates and deadlines were in effect for the by-election:

**Friday, November 2, 2018**

Date of Resignation/Vacancy of Seat

**Tuesday, December 4, 2018**

Special Ballot Application Start Date

**Wednesday, December 19, 2018**

Election Writ Issued

**Thursday, December 27, 2018 – 2:00 p.m.**

Official Nomination Day (Close of Nominations)

**Friday, December 28, 2018 - 9:00 a.m.**

Special Ballot Voting Began at Elections NL Headquarters and the District Returning Office

**Wednesday, January 16, 2019**

Special Ballot Voting at Hospitals

**Thursday, January 17, 2019**

Special Ballot Voting at Personal Care Homes

**Thursday, January 17 and Saturday, January 19, 2019 - 8:00 a.m. to 8:00 p.m.**

Advance Polls

**Saturday, January 19, 2019 - 6:00 p.m.**

Deadline to Apply for a Special Ballot at the District Returning Office and Elections NL Headquarters

**Saturday, January 19, 2019 - 8:00 p.m.**

Deadline to be Added to the Final Revised List

**Monday, January 21, 2019 - 4:00 p.m.**

Deadline for Receipt of a Completed Special Ballot Kit at the District Returning Office and Elections NL Headquarters

**Tuesday, January 22, 2019 - 11:59 p.m.**

Media Advertising Ends

**Thursday, January 24, 2019 - 8:00 a.m. to 8:00 p.m.**

Polling Day

**Sunday, January 27, 2019 - 9:00 a.m.**

Official Addition of the Votes

At the time of the by-election call, the distribution of seats in Newfoundland and Labrador was: 27 Liberals, two New Democrats, seven Progressive Conservatives, three Non-Affiliated and one vacancy.

The distribution of votes during the by-election was as follows:

- 2,300 votes cast at the Regular Polls
- 1,115 votes cast at the two Advance Polls
- 196 Special Ballot Votes were received at ENL by the specified deadline

Mr. Paul Dinn, Progressive Conservative candidate, was declared elected as the Member of the House of Assembly for Topsail-Paradise.

Expenditures on the Topsail-Paradise by-election were \$143,625. Salaries and Wages to Election Officials accounted for \$81,766 of the expenditures. \$42,111 was for Purchased Services and other election expenses. Grants and Subsidies totaled \$19,748.

## PROCEDURAL AND ADMINISTRATIVE CHANGES IN EFFECT FOR THE TOPSAIL - PARADISE BY-ELECTION

---

### 1. Registration Tables Implemented at Advance Polling Stations

Elections NL piloted Registration Tables at each Advance Polling station location for the Topsail-Paradise by-election. The purpose of the Registration Table was to deal with any elector who either did not have a Voter Registration Card (VIC), or discovered there were errors on their Voter Information Card (either their name or address was incorrect). Each Registration Table was staffed with two Registration Clerks. Supervisors were assigned to verify the electors' name and address on their Voter Information Cards and direct the flow of electors to the polling stations and to the Registration Tables. Registration Clerks were tasked with searching for electors on the voters list and partially completing oaths. By partially completing this paperwork at the Registration Tables (prior to proceeding to the polling station to continue the voting process), lineups at the polling stations were shortened tremendously. Elections NL received very positive feedback on this new initiative and Registration Tables will continue to be utilized in future advance polls.

### 2. Alphabetical List of Electors for Advance Poll Day

During Advance Poll voting, electors can vote at any of the Advance Polls in the electoral district they reside in. As a result, each Advance Poll requires a copy of the voters list for the entire electoral district. For the Topsail-Paradise by-election, the voters list was organized in alphabetical order by elector surname. Previously, the voters lists at Advance Polls were organized initially by polling division and then by elector surname in alphabetical order. This required Advance Poll staff use a two-part process to locate an elector on the voters list: first, they had to search for an elector's poll using their civic address, followed by a search through the elector's poll on the voters list for their name. The alphabetical sorting of the voters list essentially eliminated a processing step for Advance Poll staff, resulting in a significant increase in efficiency. The change was very well received by Advance Poll staff.

### 3. Introduction of New Elector ID

Elections NL introduced a new "Elector ID" field that was included on the preliminary and final list of electors for the Topsail-Paradise by-election. The Elector ID is a unique

<b>Election Positions</b>	<b>Number of Positions</b>
Deputy Returning Officers <i>(Regular Polls)</i>	37
Deputy Returning Officers <i>(Advance Polls)</i>	5
Poll Clerks <i>(Regular Polls)</i>	37
Poll Clerks <i>(Advance Polls)</i>	5
Registration Clerks <i>(Advance Polls)</i>	8
C-1 Poll Clerks <i>(Advance Polls)</i>	5
Spare Deputy Returning Officers	2
Supervisors <i>(Regular Polls)</i>	8
Supervisors <i>(Advance Polls)</i>	2
Parking Attendants <i>(Regular Polls)</i>	4
Parking Attendants <i>(Advance Polls)</i>	1
Door Attendants <i>(Regular Polls)</i>	5
Door Attendants <i>(Advance Polls)</i>	2
Messenger <i>(Advance Polls)</i>	1
Special Ballot Officers <i>(District Office)</i>	2
Special Ballot Officers <i>(Personal Care Homes)</i>	8
Special Ballot Officers <i>(Hospitals)</i>	2
Special Ballot Officer <i>(Personal Care Home &amp; Hospital) (Spare)</i>	1
Witnesses <i>(Official Addition of the Votes)</i>	1

identifier that is associated with each registered elector and remains constant despite updates to elector information such as change of address, district or poll number. The objective of using the Elector ID is to improve the quality and efficiency of the procedures related to striking Advance Poll electors from the Final List of Electors. Procedural and form revisions, as well as technological changes to the Voter Registry system, were implemented to support this initiative. The result was very successful and provided Elections NL with the capacity to process a higher number of electors using fewer resources.

## **BOUNDARIES AND POLLING STATIONS**

---

The number of poll boundaries for Topsail-Paradise were the same as those in the 2015 Provincial General Election. There was a total of 43 polling divisions in the district, comprised of 37 regular polling divisions, five Advance Polls and one Special Ballot poll. While the number of polling divisions remained the same as in 2015, there was significant reconfiguration of many of the polling divisions. The polling divisions were reconfigured to ensure the distribution of electors assigned to each polling division was more evenly balanced. A listing of the polling divisions and their boundary descriptions (Appendix A), along with a map of the electoral district showing the polling division boundaries (Appendix B), are included in this report.

## **ELECTION OFFICIALS**

---

The Returning Officer, who manages the election at the district level, appoints an Election Clerk and two Special Ballot Officers. Together, they work in the district Returning Office to help administer the by-election.

The Returning Officer is also responsible for hiring and training all election officials for their district. This includes everyone who will work in the polls: Deputy Returning Officers, Poll Clerks, Supervisors, Registration Clerks, Door Attendants, Parking Attendants, Messengers and Witnesses. The Returning Office also hires and trains the Special Ballot Officers who conduct the hospital and personal care home votes.

## CANDIDATE REGISTRATION AND NOMINATION

At the time of the Topsail-Paradise by-election, there were three registered parties in the province: the Liberal Party, the New Democratic Party and the Progressive Conservative Party. Each of the three registered parties put forth a candidate by the 2:00 p.m. deadline on Thursday, December 27, 2018.

## METHODS OF VOTING

### SPECIAL BALLOT VOTING: ENL HEADQUARTERS AND DISTRICT OFFICE

Special Ballot applications were available to electors on the Elections NL website, by mail, at Elections NL headquarters in St. John's and at the Topsail-Paradise district Returning Office.

Elections NL headquarters and the district Returning Office began accepting Special Ballot applications from the date of the writ issue on Wednesday, December 19, 2018, to the application deadline of 6:00 p.m. on Saturday, January 19, 2019.

Beginning on Friday, December 28, 2018, electors were able to vote by Special Ballot by mail or in person at the district Returning Office and at Elections NL headquarters. Once a Special Ballot application was approved, a Special Ballot voting kit was issued and the applicant was considered to have voted.

The deadline for receipt of a completed Special Ballot kit was Monday, January 21 at 4:00 p.m.

A completed Special Ballot voting kit could be returned by mail or dropped off at either the district

Location	Number of Special Ballot Kits Approved
District Returning Office	80
ENL Headquarters (includes mail outs)	12
Home Visits in District	18
Hospitals	4
Personal Care Homes	86
<b>TOTAL</b>	<b>200</b>

BURT, Kathleen  
New Democratic Party

DINN, Paul  
Progressive Conservative Party

HYNES-COATES, Patricia  
Liberal Party

Returning Office or at Elections NL headquarters by the applicable deadlines specified in the by-election calendar.

Administrative deadlines must be in place and adhered to in order to provide sufficient time for the application to be completed and approved, and to allow adequate time for the ballots to be returned by mail or in person in time for counting.

A total of 200 Special Ballot applications were processed. Four Special Ballots were not returned to Elections NL headquarters in time for the Special Ballot count procedure, resulting in a total of 196 Special Ballot votes being counted. Comparatively, in the 2015 General Election, there were 281 electors who voted by Special Ballot in the district.

## SPECIAL BALLOT VOTING: HOSPITALS

---

Special Ballot voting was offered to Topsail-Paradise residents in four hospitals on Wednesday, January 16, 2019.

A representative from Elections NL and a facility representative arranged for the hospital visitations and two appointed Special Ballot Officers conducted the vote at the Health Sciences Centre, St. Clare's Hospital, The Miller Centre and the Waterford Hospital. The hospital vote resulted in a total of four cast ballots.

## SPECIAL BALLOT VOTING: PERSONAL CARE HOMES

---

Special Ballot voting was offered to Topsail-Paradise residents in two personal care homes on Thursday, January 17, 2019. A representative from Elections NL, the district Returning Officer and a facility representative arranged the vote in two Personal Care Homes in the district. Eight appointed Special Ballot Officers conducted the vote. The Personal Care Home vote resulted in a total of 86 cast ballots.

Personal Care Home Location	Number of Special Ballot Votes Cast
Meadow Creek Retirement Centre	54
Karwood Retirement Retreat	32
<b>TOTAL</b>	<b>86</b>



## ADVANCE POLL

---

Advance Poll voting was held in the Topsail-Paradise district on Thursday, January 17 and Saturday, January 19, 2019, both days from 8:00 a.m. to 8:00 p.m. Advance voting took place in two buildings. One building housed three polling stations and the other housed two polling stations (for a total of five Advance Polls):

- Octagon Pond Elementary, 11 Sgt. Donald Lucas Drive, Paradise
- Lodge Conception Masonic Hall, 2639 Topsail Road, Chamberlains, Conception Bay South

The Returning Officer hired and trained 32 election officials for the Advance Polls.

The preliminary list of electors, certified on December 19, 2018 and containing 10,195 electors, was used on the first day of Advance Poll voting on Thursday, January 17, 2019. A second, updated list of electors was certified on January 18, 2019 and contained 10,279 electors. This list was comprised of revisions and updates from both Special Ballot voting and the first day of Advance Poll voting and was used on the second day of Advance Poll voting on Saturday, January 19, 2019.

The Advance Poll results were as follows:

- 553 votes cast on the first day of Advance Poll voting (Thursday, January 17, 2019)
- 562 votes cast on the second day of Advance Poll voting (Saturday, January 19, 2019)
- 1115 total votes cast (two Advance Polls combined)
- 9 rejected ballots (which resulted in a total of 1107 valid ballots)

Comparatively, during the 2015 Provincial General Election, there were 886 votes cast during one day of Advance Polling in the district of Topsail-Paradise, with zero rejected ballots for a total of 886 valid votes cast.

Comparatively,  
during the 2015 Provincial General  
Election, there were 886 votes cast  
during one day of Advance Polling  
in the district of Topsail-Paradise,  
with zero rejected ballots  
for a total of 886 valid votes cast.

## BY-ELECTION DAY

Regular poll voting took place on Thursday, January 24, 2019 from 8:00 a.m. to 8:00 p.m. at 37 polls in four different locations:

- Octagon Pond Elementary School (Gymnasium), 11 Sgt. Donald Lucas Drive, Paradise
- Topsail Elementary School (Gymnasium), 12 Spruce Hill Road, Topsail (Conception Bay South)
- Lodge Conception Masonic Hall, 2639 Topsail Road, Chamberlains (Conception Bay South)
- Society of United Fishermen (SUF), 2471 Topsail Road (Conception Bay South)

There were 3603 valid ballots cast in the by-election. This compares with 5799 valid votes cast in the 2015 Provincial General Election.

## ELECTOR PARTICIPATION

The preliminary list of electors for Topsail-Paradise, certified by the Chief Electoral Officer on December 19, 2018, contained a total of 10,195 registered electors.

A revision period took place from December 20 to Saturday, January 19. During this period, electors were verified, updated, removed or added to the list as a result of various revision activities. Revision activities included direct communication with electors facilitated through our website, e-mail or the Elections NL contact centre, swear-ins during two days of Advance Poll voting, as well as Special Ballot voting at personal care homes, hospitals, the district Returning Office and Elections NL headquarters.

Voter Information Cards (VICs) were mailed to each elector on the preliminary list of electors prior to the beginning of the revision period. The distribution of these cards prompted electors to contact Elections NL to verify, update, remove or add their information on the voters list. This resulted in 186 electors being added to the list and 68 being removed during the revision period. There were 10,313 electors on the final revised list of electors.

The table below illustrates voter turnout in by-elections over the last 10 years. 'Eligible Voters' below includes the total number of eligible electors on the Final List of Electors for that particular electoral event, as well as any swear-ins that took place at the polls. Note that voter turnout is rounded to the nearest tenth of a percent.

Year	District	Eligible Voters	Ballots Cast	Voter Turnout (%)
2019	Topsail-Paradise	10,664	3611	33.9
2018	Windsor Lake	9,730	4,773	49.1
2017	Mount Pearl North	10,650	4,418	41.5
2014	Virginia Waters	10,465	4,853	46.4
2014	St. George's – Stephenville East	7,782	3,760	48.3
2014	Conception Bay South	10,296	4,276	41.5
2014	Humber East	8,633	3,985	46.2
2014	Trinity – Bay de Verde	7,278	4,651	63.9
2013	Cartwright – L'Anse au Clair	3,248	2,141	65.9
2013	Carbonear – Harbour Grace	9,749	5,508	56.5
2011	Humber West	9,103	3,321	36.5
2010	Topsail	10,506	3,353	31.9
2010	Conception Bay East – Bell Island	11,464	3,990	34.8
2009	The Straits – White Bay North	7,097	4,296	60.5
2009	Terra Nova	8,676	4,366	50.3
<b>Average By-Election Voter Turnout (%)</b>				<b>47.1</b>

## OFFICIAL ADDITION OF THE VOTES

---

In accordance with s. 153 of the Elections Act, 1991, the Official Addition of the Votes must take place three days after polling day. In the case of the Topsail-Paradise by-election, the Official Addition took place on Sunday, January 27, 2019 at 9:00 a.m. at the Returning Office in the presence of two required witnesses.

During the official addition process, the Returning Officer removes the Official Statement of the Poll sheets from each district ballot box and reviews them to ensure the accuracy of the calculation of vote totals.

The conclusion of the Official Addition of the Votes confirmed the election of Progressive Conservative Candidate Paul Dinn.

## RETURN OF THE WRIT

---

Section 163(1) of the Elections Act, 1991 requires a waiting period of 12 clear days between the conclusion of the Official Addition and the return of the writ of election. This provides sufficient time for a candidate, voter, district officer or scrutineer to request a judicial recount. A recount was not requested in the Topsail-Paradise by-election. As a result, the writ of election was returned to Elections NL on Monday, February 11, 2019 and the Progressive Conservative Candidate, Mr. Paul Dinn, was affirmed into office on February 19, 2019.


## OBSERVATIONS OF THE CHIEF ELECTORAL OFFICER

---

### ***STAFF HIRING FOR DISTRICT OFFICE, POLLING STATIONS AND AT ELECTIONS NEWFOUNDLAND AND LABRADOR HEADQUARTERS***

Approximately 4,000 polling day workers are required to administer an election province wide on polling day. Currently, sections 21(3) and 22 of the Elections Act, 1991 ('Act') restrict Elections NL from hiring Election Day workers under the age

Candidates	Political Affiliation	Preliminary Count Results	Official Count Results
BURT, Kathleen	NDP	187	<b>187</b>
DINN, Paul	PC	2,204	<b>2,204</b>
HYNES-COATES, Patricia	LIB	1,212	<b>1,212</b>



of 18 years or persons in the employ of a department of the government of the province or the Government of Canada. This restriction greatly impacts the ability of Elections NL to grow its workforce, implement technology, and deprives the youth of our province the opportunity to actively participate in current affairs and engage in civic life.

Elections NL fully understands what the positive impacts of removing the restrictions on poll workers would mean for electoral administration. Allowing federal and provincial employees and youth aged 16 and 17 to work at a polling station creates a broader pool of candidates to choose from resulting in a greater wealth of knowledge and experience in the poll and contributes to an overall positive experience for the elector. From an administrative perspective, federal and provincial employees and most youth have a technology capacity that is above average and would meet Elections NL's requirements as the office strives to innovate and find efficiencies in the electoral process while meeting the standards expected by our primary stakeholder – the elector.

### ***SPECIAL BALLOTS: VOTING AT PERSONAL CARE HOMES***

Rather than the blank, write-in Special Ballot, a regular ballot with the names and political parties of the candidates was used for the Special Ballot vote at Chancellor Park. The use of a regular ballot, which was also implemented with the Personal Care Home vote in the Mount Pearl North by-election, was well received by electors who voted by Special Ballot. It also makes the counting and scrutinizing of the Special Ballots easier when the Special Ballot count procedure was conducted. It also lessens the rate of rejected ballots since electors are only required to mark an 'x', as opposed to having to print the name of the candidate and the name of the political party of the candidate on the blank, write-in Special Ballot (as required in the Elections Act, 1991).

The new Special Ballot legislation enacted in the Fall of 2017 creates a challenging timeframe for the delivery and receipt of Special Ballots to electors residing outside the province and outside the country. From official Nomination day to the close of Special Ballot voting, the window of time is now approximately 18 days (for a 28 day minimum election call) for Special Ballot kits to be mailed to approved applicants and subsequently returned

to Elections NL in time for the Special Ballot counting procedure. During a provincial General Election, Elections NL receives requests for Special Ballots from around the world: Australia, Kenya, Eastern Europe and the Middle East, especially the College of the North Atlantic campus in Qatar.

## ***ADVANCE VOTING DAYS***

Elections Newfoundland and Labrador has observed that the proportion of votes cast at Advance Polls during electoral events is continually increasing. Similar to the Mount Pearl North by-election, the Chief Electoral Officer opted to hold Advance Voting for the Windsor Lake by-election over two days to offer additional opportunities for voters to cast their ballot, specifically providing one of those opportunities on a Saturday.

Based on the distribution of votes during the September 20, 2018 by-election, the addition of a second day of Advance Polling was well-received by the electors of the district. Of the 4,773 total votes cast in the by-election, 1,439 votes were cast during the two days of Advance Polls, representing 30.1% of the vote. In contrast, during the 2015 General Election, only 18.4% of votes cast were at the Advance Polls (889 votes of 4825 total votes).

Going forward, the Chief Electoral Officer will continue to provide additional Advance Voting opportunities for electors during by-election campaigns where it is feasible for Elections NL to conduct multiple Advance Voting days. The Elections Act, 1991, currently permits Advance polls to be held on 1 or more of the 7 days immediately preceding polling day.

## APPENDIX A: POLL BOUNDARY DESCRIPTIONS

Polling Division	Boundary Descriptions	Registered Electors
1.	PARADISE: CLOUDBERRY DRIVE (ODD AND EVEN NUMBERS 13 AND GREATER); DANIBERRY PLACE; HOLLYBERRY DRIVE; HUDSONBERRY DRIVE; JONESBERRY CRESCENT; AND SHELBY STREET (INCLUDING KARWOOD CABINS, 23 SHELBY STREET).	322
2.	PARADISE: CLOUDBERRY DRIVE (EVEN AND ODD NUMBERS 2 TO 12); CORMORANT PLACE; CRANE STREET; FOXGLOVE STREET; HUMMINGBIRD ROAD; MARKET PLACE WAY; KARWOOD DRIVE (INCLUDING KARWOOD RETIREMENT RETREAT, 39 KARWOOD DRIVE); KESTREL DRIVE; SAFFRON STREET; SANDERLING PLACE; AND SILVER BIRCH CRESCENT.	258
3.	PARADISE: EIDER PLACE; FLAMINGO DRIVE; GOLDFINCH DRIVE; MARY ANN PLACE; MERGANSER AVENUE; MOCKINGBIRD DRIVE; AND YELLOW WOOD DRIVE.	258
4.	PARADISE: EAGLE STREET; HECTOR PLACE; IMOGENE CRESCENT; MASTIFF PLACE; MERLYN PLACE; AND UNGAVA STREET.	310
5.	PARADISE: AURORA PLACE; HARP PLACE; PORTEUS PLACE; CARRISBROOKE PLACE; AND RANGER AVENUE.	223
6.	PARADISE: DISCOVERY CRESCENT; KEMERTON PLACE; OSPREY PLACE; AND TRAILS END DRIVE.	292
7.	PARADISE: HUSSEYS ROAD; ISLINGTON PLACE; KIPAWA DRIVE; MILTON ROAD; ROBERT'S HEIGHTS; AND WOODVILLE ROAD.	249
8.	PARADISE: DONNA ROAD; ELMER PLACE; GAIL PLACE; GRANDVIEW AVENUE; GREGG AVENUE; HEIGHTVIEW DRIVE; MALLOW DRIVE (EVEN AND ODD NUMBERS 1 TO 7 INCLUDING THE TUCKAMORE CENTRE); SUNVALLEY DRIVE; AND TOSLO STREET.	328
9.	PARADISE: BARCHESTER STREET; BERESFORD PLACE; FRED W. BROWN DRIVE; LANCEFIELD STREET; PARADISE ROAD (EVEN NUMBERS 60 TO 100, FROM THE INTERSECTIONS OF MILTON ROAD TO KIPAWA DRIVE AND ODD NUMBERS 69 TO 123, FROM THE INTERSECTIONS OF MALLOW DRIVE TO PLEASANTVIEW AVENUE); PLEASANTVIEW AVENUE; AND STORMONT STREET.	292
10.	PARADISE: PARADISE ROAD (EVEN NUMBERS 8 TO 56, FROM THE INTERSECTIONS OF TOPSAIL ROAD TO MILTON ROAD AND ODD NUMBERS 1 TO 61, FROM THE INTERSECTIONS OF TOPSAIL ROAD TO MALLOW DRIVE) AND TOPSAIL ROAD (EVEN NUMBERS 1354 TO 1556 FROM THE OUTER RING ROAD OVERPASS TO IRVING DRIVE, ODD NUMBERS 1365 TO 1621 FROM THE OUTER RING ROAD OVERPASS TO MCNAMARA DRIVE).	229
11.	PARADISE: ADAMS POND ROAD; BERNARD DRIVE; CAMROSE DRIVE (EVEN NUMBERS 2 TO 10); DINA PLACE; INWOOD CRESCENT; JANAL'S ROAD; PARADISE ROAD (EVEN NUMBERS 108 TO 238 FROM THE INTERSECTIONS OF WOODVILLE ROAD TO CAMROSE DRIVE, ODD NUMBERS 123 TO 255 FROM THE INTERSECTIONS OF PLEASANTVIEW AVENUE TO ARCHIBALD DRIVE); VENTON PLACE; AND VIRDEN PLACE.	234
12.	PARADISE: DROVER'S ROAD; GOSSE'S ROAD; HARCOURT ROAD; IRVING DRIVE; SHEPPARD PLACE; AND TOPSAIL ROAD (EVEN NUMBERS 1560 TO 1604 FROM IRVING DRIVE TO CLEARVIEW HEIGHTS).	240
13.	PARADISE: BREMIGEN'S BOULEVARD (COMMERCIAL AREA); BURNABY STREET; DEVAUGHN STREET; KENMOUNT ROAD (EVEN NUMBERS 1180 AND HIGHER, ODD NUMBERS 1187 AND HIGHER, COMMERCIAL AREA); KINKORA STREET; MAVERICK PLACE (COMMERCIAL AREA); MCNAMARA DRIVE (COMMERCIAL AREA); PANORAMIC PLACE; POLLARD AVENUE (COMMERCIAL AREA); RAVENWOOD CRESCENT; TIPPERARY STREET; AND TIVERTON STREET.	271
14.	PARADISE: CASTLE HEIGHTS; CLEARVIEW HEIGHTS; HARTLAND AVENUE; MARY JOE'S LANE; MOUNT GREGORY PLACE; OCTAGON HEIGHTS; PADDY KAY DRIVE; TILTING PLACE; AND TOPSAIL ROAD (EVEN NUMBERS 1620 TO 1708, FROM CLEARVIEW HEIGHTS TO STANHOPE DRIVE).	280

Polling Division	Boundary Descriptions	Registered Electors
15.	PARADISE: ANQUILLE AVENUE; BLOMIDON STREET; KILBURN AVENUE; LANARK DRIVE (EVEN AND ODD NUMBERS 292 AND HIGHER INCLUDING VISTA GARDENS CONDOMINIUMS); MALLOW DRIVE (EVEN NUMBERS 112 TO 174, ODD NUMBERS 115 TO 177); MARBLE AVENUE; MOUNT SAWYER PLACE; MOUNT SYLVESTER PLACE; AND THATCHER PLACE.	263
16.	PARADISE: BLUE JAY PLACE; GLENDAREK DRIVE; HARMONY STREET; LOGAN STREET; OSSINGTON STREET; QUINTON PLACE; AND STANHOPE DRIVE.	251
17.	PARADISE: ALMA AVENUE; CORCORAN'S ROAD; CROYDON STREET; DAMIEN STREET; GREENFIELD'S PLACE; KATE MARIE PLACE; LEAH WAY; SKEFFINGTON PLACE; SPRACKLIN BOULEVARD (ODD AND EVEN NUMBERS 1 TO 36); AND TOPSAIL ROAD (ODD NUMBERS 1641 TO 1939 FROM MCNAMARA DRIVE TO TOPSAIL POND ROAD INCLUDING MEADOW CREEK RETIREMENT CENTRE, 1895 TOPSAIL ROAD).	344
18.	PARADISE: ANGELA PLACE; ARCHIBALD DRIVE (ODD NUMBERS 1 TO 35); CALLAGHAN PLACE; CARLINGFORD STREET; CHRISTOPHER STREET; LAKEWYNDS DRIVE; LANARK DRIVE (EVEN NUMBERS 2 TO 170); NICHOLAS PLACE; ST. THOMAS LINE (EVEN NUMBERS 2 TO 52); TANYA PLACE; AND TOPSAIL ROAD (EVEN NUMBERS 1714 TO 1832, FROM STANHOPE DRIVE TO ST. THOMAS LINE).	323
19.	CONCEPTION BAY SOUTH / PARADISE: CONCEPTION BAY SOUTH: BELLE ISLE PLACE; BOGGANS LANE; BOGGANS MEADOW; BOGGANS PLACE; FROG POND ROAD; GEEHAN DRIVE; AND TOPSAIL ROAD (ODD NUMBERS 2141 TO 2377, THE SOUTHERN SIDE OF TOPSAIL ROAD FROM THE INTERSECTIONS TOPSAIL POND ROAD TO MILLERS ROAD). PARADISE: TOPSAIL ROAD ( ODD NUMBERSS 1961 AND 1973).	213
20.	CONCEPTION BAY SOUTH: ALLANS LINE; BIRCHWOOD PLACE; BRIGHTON PLACE; DRIFTWOOD PLACE; MAINSAIL DRIVE; MILLERS ROAD; MUNCARTER PLACE; ROSALIE PLACE; SERENITY LANE; AND SOMERVILLE MEADOWS.	319
21.	CONCEPTION BAY SOUTH: ABIGAIL PLACE; ANNIES PLACE; ARBOR PLACE; BAILEY PLACE; BARNES LANE; BARNES PLACE; HICKMAN PLACE; LUPIN PLACE; MONUMENT ROAD; TOPSAIL HEIGHTS; TOPSAIL MANOR ESTATES; TOPSAIL ROAD (ODD NUMBERS 2381 TO 2409 FROM MILLERS ROAD TO MONUMENT ROAD); AND TOPSAIL VIEW PARK.	335
22.	CONCEPTION BAY SOUTH: CHURCH TERRACE; CONIFEROUS ROAD; HALEYS PLACE; JASON PLACE; METCALFES LANE; MONTEGO PLACE; RECTORY ROAD; SPRUCE HILL ESTATES; SPRUCE HILL PLACE; STAFFORDS ROAD; TOPSAIL ROAD (ODD NUMBERS 2469 TO 2553 FROM SPRUCE HILL ROAD TO FOWLER'S ROAD); AND WEBSTER PLACE.	246
23.	CONCEPTION BAY SOUTH: KINGSWOOD DRIVE; MAPLE STREET; MICHELIN PLACE; PARMITERS LANE; SPRUCE HILL ROAD; AND TOPSAIL ROAD (ODD NUMBERS 2413 TO 2459 FROM MONUMENT ROAD TO SPRUCE HILL ROAD).	318
24.	CONCEPTION BAY SOUTH / PARADISE: PARADISE: ANGEL'S ROAD; BALSAMWOOD ROAD; DAWE'S ROAD; ELLINGTON CLOSE; GENTLER PLACE; HALLIBURTON STREET (ODD AND EVEN NUMBERS 1 TO 36); HANSEN PLACE; KINDER DRIVE; ROUND POND ROAD; VINEYARD DRIVE; AND VANELLEN PLACE. CONCEPTION BAY SOUTH: BLUE SPRUCE DRIVE; HALLIBURTON STREET (EVEN AND ODD NUMBERS 38 TO 55); LUCSTON AVENUE; SANDSTONE STREET; AND THOMSTON AVENUE.	269
25.	CONCEPTION BAY SOUTH: PETAWA PARK; SOUTHSHORE DRIVE; SPARROW DRIVE (ODD NUMBERS 3 TO 49, EVEN NUMBERS 8 TO 48); STARRIGAN PLACE; AND WINDFALL CRESCENT.	252
26.	CONCEPTION BAY SOUTH: CARDERO PLACE; CARRIGAN PLACE; CHANTERELLE DRIVE (ALL EVEN NUMBERS); COZUMEL PLACE; SPARROW DRIVE (EVEN NUMBERS 52 TO 92, ODD NUMBERS 63 TO 81); SWANSEA STREET (EVEN NUMBERS 128 TO 190) AND WINDEMERE PLACE (ALL ODD NUMBERS).	230

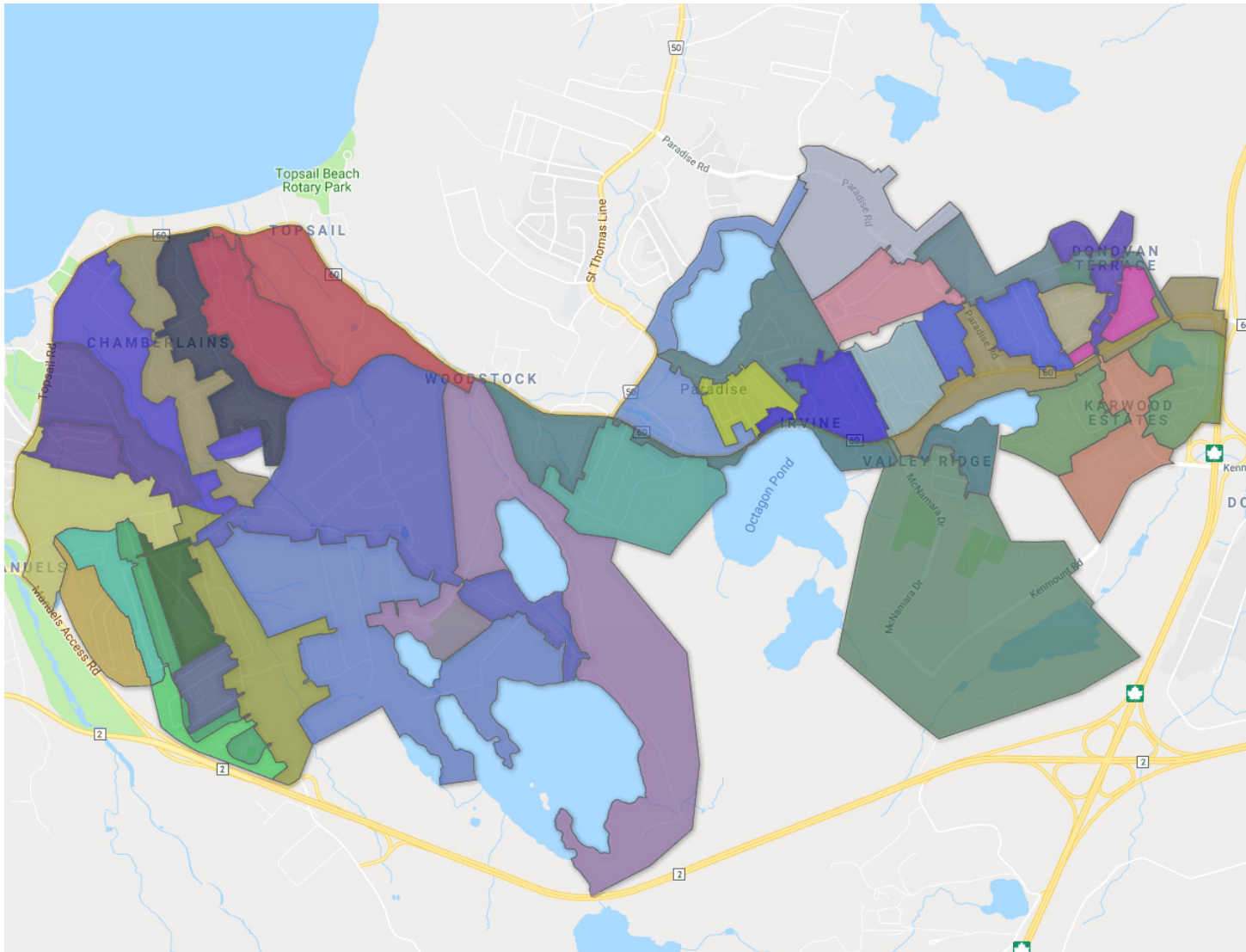


Polling Division	Boundary Descriptions	Registered Electors
27.	CONCEPTION BAY SOUTH: CALEDONIA PLACE; CHANTERELLE DRIVE (ODD NUMBERS 15 TO 65); CHELSEA PLACE; SWANSEA STREET (ODD NUMBERS 1 TO 187, EVEN NUMBERS 6 TO 126); AND WINDEMERE PLACE (ALL EVEN NUMBERS).	248
28.	CONCEPTION BAY SOUTH: CLIFFSIDE AVENUE; RIVERSIDE AVENUE (EVEN NUMBERS 6 TO 12); ROCKLAND HEIGHTS; SQUIRES AVENUE (ALL EVEN NUMBERS, ODD NUMBERS 37 TO 55); SWEETENWATER AVENUE (ALL EVEN NUMBERS, ODD NUMBERS 41 TO 85); AND SWEETENWATER CRESCENT.	266
29.	CONCEPTION BAY SOUTH: CAMBRIDGE CRESCENT; ECHOSTONE PLACE; HILLVIEW AVENUE; NEILS LINE (EVEN NUMBERS 28 AND GREATER); RIVERSIDE AVENUE (ODD NUMBERS 1 TO 17, EVEN NUMBERS 26 AND GREATER); SQUIRES AVENUE (ODD NUMBERS 1 TO 35); SWEETBRIDGE AVENUE; AND SWEETENWATER AVENUE (ODD NUMBERS 1 TO 39).	238
30.	CONCEPTION BAY SOUTH: ACCESS PLACE; DENFORD ESTATES; EWINGS ROAD; GARLAND PLACE; JAVELIN PLACE; MANUELS ACCESS ROAD (THE NORTHEAST SIDE OF MANUELS ACCESS ROAD); NEILS LINE (ALL ODD NUMBERS, EVEN NUMBERS 2 TO 14); NEILS LINE EXTENSION; PARTRIDGE PLACE; QUARTZ PLACE; TOPSAIL ROAD (ODD NUMBERS 2623 TO 2733); TREELAND PLACE; WHEELER PLACE; AND WYLIES PLACE.	320
31.	CONCEPTION BAY SOUTH: ANDLORLYN PLACE; CABOT ROAD; HIERLIHYS PLACE; RICHS PLACE; SAILVIEW PLACE; AND SWANSBOROUGH HEIGHTS.	286
32.	CONCEPTION BAY SOUTH: DOGWOOD PLACE; FOWLER'S ROAD (ODD NUMBERS 1 TO 159 AND EVEN NUMBERS 2 TO 148 BOTH SIDES OF FOWLER'S ROAD FROM TOPSAIL ROAD TO NEILS LINE EXTENSION); HERSHEY PLACE; HIDDEN MEADOWS; MAPLE RIDGE PLACE; PECAN LANE; SILVERWOOD DRIVE; SOMERSET PLACE; TOPSAIL ROAD (ODD NUMBERS 2569 TO 2621 FROM FOWLER'S ROAD TO RICHS PLACE); UPLANDS ROAD; VIEW LANE; AND WOODPATH ROAD.	323
33.	CONCEPTION BAY SOUTH: EARLSTON AVENUE; FOWLER'S ROAD (ODD NUMBERS 161 TO 369 AND EVEN NUMBERS 166 TO 376, BOTH SIDES OF FOWLER'S ROAD FROM NEILS LINE EXTENSION TO THE CBS BYPASS); KIRKSTON AVENUE; AND VALLEYVIEW CRESCENT.	336
34.	CONCEPTION BAY SOUTH: BLACKSTRAP PATH; BLACKSTRAP PLACE; BREEZE PLACE; CAINES PLACE; HORIZON PLACE; LITTLE BELL PLACE; MARILIZ PLACE; STRATTON PLACE; AND TAMPA DRIVE.	259
35.	PARADISE / CONCEPTION BAY SOUTH: PARADISE: BALLYSHANNON STREET; BUCKINGHAM DRIVE (EVEN NUMBERS 112 TO 354 AND ODD NUMBERS 121 TO 315 AND ); CARDINAL CRESCENT; EVEREST STREET; GREENVALLEY LANE; JOSHUA STREET; ORTEGA DRIVE; SHELBURNE STREET; SHERBROOKE STREET; AND TRANQUIL PLACE. CONCEPTION BAY SOUTH: BUCKINGHAM DRIVE (ODD NUMBERS 1 TO 85 AND EVEN NUMBERS 2 TO 100).	293
36.	PARADISE: SHALLOWAY PLACE; STOKE'S ROAD; THREE ISLAND POND ROAD; AND TOPSAIL POND ROAD.	318
37.	PARADISE: ALBERTON DRIVE; CANARY PLACE; CARBERRY PLACE; DUFF'S CRESCENT; HAMPTON PLACE; HERMITAGE PLACE; PATTISON STREET; RYDER PLACE; SGT. DONALD LUCAS DRIVE (ALSO KNOWN AS SANDRINGHAM DRIVE); SPRACKLIN BOULEVARD (ODD AND EVEN NUMBERS 37 AND HIGHER);AND TRENTON DRIVE.	277

**Total Electors for TOPSAIL - PARADISE: 10313**



# APPENDIX B: TOPSAIL - PARADISE POLL DIVISION MAP



For detailed maps of each poll, visit the Elections Newfoundland and Labrador website at [www.elections.gov.nl.ca](http://www.elections.gov.nl.ca).

## APPENDIX C: RECAPITULATION OF VOTES

Poll No.	Polling Division	Eligible Voters		BURT, Kathleen NDP	DINN, Paul PC	HYNES- COATES, Patricia NDP	Rejected Ballots	Total Ballots
		Revised List	Swear Ins at Polls					
1	Paradise	322	4	0	36	15	0	51
2	Paradise	258	7	1	22	21	0	44
3	Paradise	258	13	0	39	18	0	57
4	Paradise	310	3	2	27	25	0	54
5	Paradise	223	1	3	26	10	0	39
6	Paradise	292	5	4	34	32	0	70
7	Paradise	249	3	3	22	11	0	36
8	Paradise	328	9	9	52	17	0	78
9	Paradise	292	4	1	24	6	0	31
10	Paradise	229	3	4	13	15	0	32
11	Paradise	234	4	2	37	13	0	52
12	Paradise	240	4	2	29	17	0	48
13	Paradise	271	3	3	23	10	0	36
14	Paradise	280	10	1	39	13	0	53
15	Paradise	263	19	1	40	19	0	60
16	Paradise	251	9	1	27	26	0	54
17	Paradise	344	7	3	30	18	0	51
18	Paradise	323	4	4	31	17	0	52
19	Conception Bay South/ Paradise	213	9	4	32	20	0	56
20	Conception Bay South	319	14	7	66	42	0	115
21	Conception Bay South	335		11	41	42	0	94
22	Conception Bay South	246	3	6	35	35	0	76
23	Conception Bay South	318		11	44	36	0	91
24	Conception Bay South/ Paradise	269	10	6	47	30	0	83
25	Conception Bay South	252	3	3	17	16	0	36
26	Conception Bay South	230		4	28	18	1	51
27	Conception Bay South	248	5	4	47	18	0	69
28	Conception Bay South	266	9	5	42	35	0	82
29	Conception Bay South	238	4	3	36	24	0	63
30	Conception Bay South	320	4	6	32	18	0	56

Poll No.	Polling Division	Eligible Voters		BURT, Kathleen NDP	DINN, Paul PC	HYNES- COATES, Patricia NDP	Rejected Ballots	Total Ballots
		Revised List	Swear Ins at Polls					
31	Conception Bay South	286	8	1	52	12	0	65
32	Conception Bay South	323	7	6	32	36	0	74
33	Conception Bay South	336	10	6	46	28	0	80
34	Conception Bay South	259	6	3	28	17	0	48
35	Conception Bay South/ Paradise	293	10	0	47	22	0	69
36	Paradise	318	9	4	53	22	0	79
37	Paradise	277	28	5	77	33	0	115
38	ADV Chamberlains(CBS)		12	14	127	70	1	212
39	ADV Chamberlains(CBS)		18	15	161	84	3	263
40	ADV Chamberlains(CBS)		25	6	144	66	1	217
41	ADV Chamberlains(CBS)		14	0	148	53	0	201
42	ADV Chamberlains(CBS)		13	7	159	56	0	222
43	Special Ballots		18	6	112	76	2	196
	<b>TOTAL:</b>		<b>10,313</b>	<b>351</b>	<b>187</b>	<b>2,204</b>	<b>1,212</b>	<b>8</b>